



C A B / C H A S S I S
I M M E D I A T E (R E Q U E S T E D) A P P L I C A T I O N S



PRIMARY (CORE) PRODUCT

PRODUCT TYPE: CAB / CHASSIS

PRIMARY PURPOSE: VOCATIONAL / SERVICE TRUCK CHASSIS

CONFIGURATIONS: MULTIPLE CABIN TYPES, CUSTOM CHASSIS WHEELBASES, PERIPHERAL OPTIONS TO MEET CUSTOMER NEEDS

POWER SYSTEM: LITHIONICS NEVERDIE® ADVANCED LiFePO4 BATTERIES

PROPULSION: PARKER GVM 210 SERIES

SUSPENSION: AXLETECH ISAS 3000 SERIES (FRONT AND REAR)

C A B / C H A S S I S S O L U T I O N
P R E P A R E D F O R B O D Y A P P L I C A T I O N U P - F I T



CHASSIS OEM

KNAPHEIDE
SINCE 1848

BODY
MANUFACTURER



BRAND|FX
EVERLAST TRUCK BODIES

ETC.

(IN PROCESS TO GROW PARTNER BODY MANUFACTURERS)

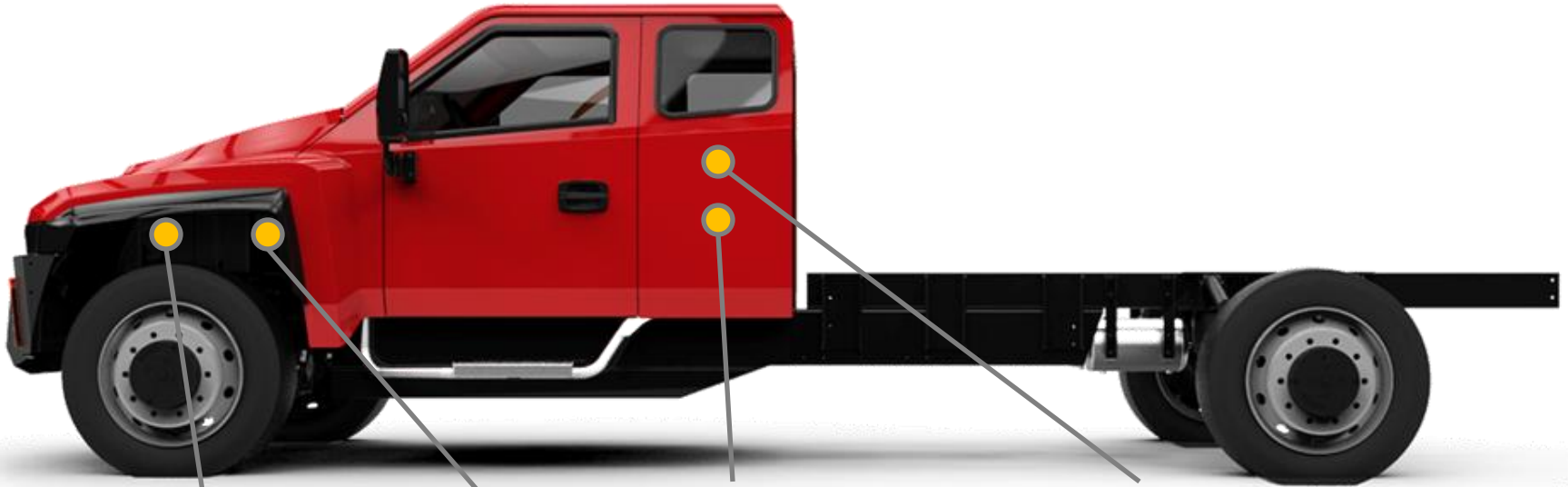
TRUCK UTILITIES
INC

BODY BUILDER
(UP-FITTER)



PRODUCT PROMOTION AND PARTNERSHIPS: ZEUS ELECTRIC CHASSIS IS CURRENTLY WORKING WITH MULTIPLE BODY MANUFACTURERS AND BODY BUILDERS TO COLLECTIVELY BUILD, SHARE, AND PROMOTE ELECTRIFICATION OF THE TURNKEY ELECTRIC TRUCK SOLUTION.

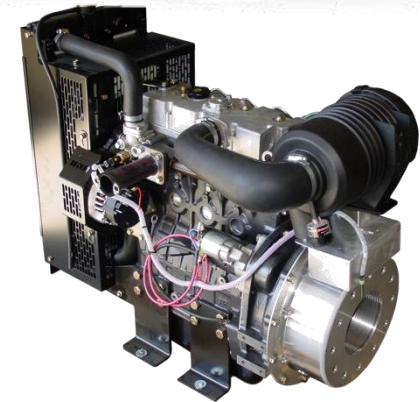
ON-BOARD TOOL / EQUIPMENT POWER SOLUTIONS (BACK OF CAB FORWARD)



HYDRAULIC UNIT



AIR COMPRESSOR



DYNAMIC POWER (OUTPUT)

SPECIFIC “POWER SYSTEM” INTEGRATION: ZEUS ELECTRIC HAS DESIGN PACKAGED CRITICAL “POWER SYSTEM” TECHNOLOGY THAT IS MOST COMMON ON SERVICE / VOCATIONAL TRUCKS. TO ENSURE THE CHASSIS PRODUCT IS BALANCED AND SUPPORT THE CUSTOMER FOR THE LIFE OF THE CHASSIS.

ON-BOARD TOOL / EQUIPMENT POWER SOLUTIONS
(BACK OF CAB FORWARD)



CURRENT STATE OF MULE BUILD:

- MULE CHASSIS CONSTRUCTED
- POWER SYSTEM (BATTERIES AND BMS) INSTALLED
- PROPULSION CONTROLS INSTALLED
- MOTOR ASSEMBLIES FIT (NOT SHOWN)
- MULE CABIN INSTALLED
- CHARGING ARCHITECTURE AND INFRASTRUCTURE ON DECK FOR INSTALLATION
- AWAITING MISCELLANEOUS FABRICATED COMPONENTS
- AWAITING SUSPENSION COMPONENTS (MULE)

•ONCE COMPLETE, WILL CONDUCT COMPONENT AND SYSTEM LEVEL TESTING AND MONITORING

